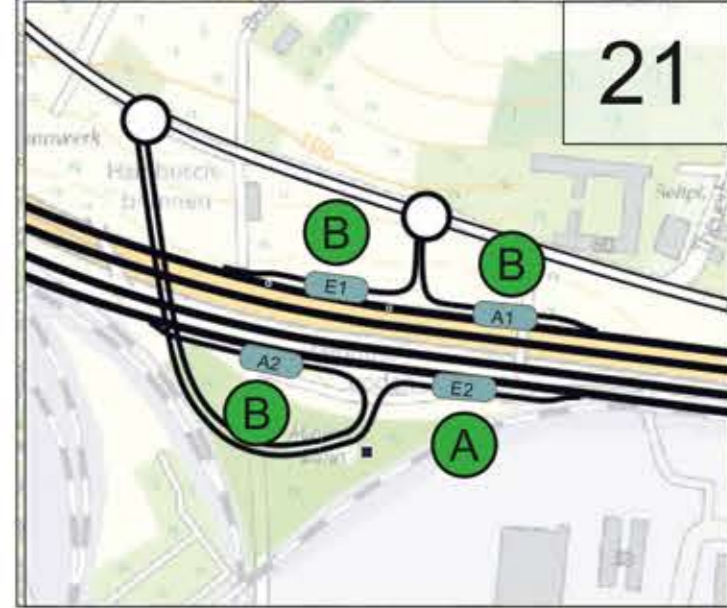
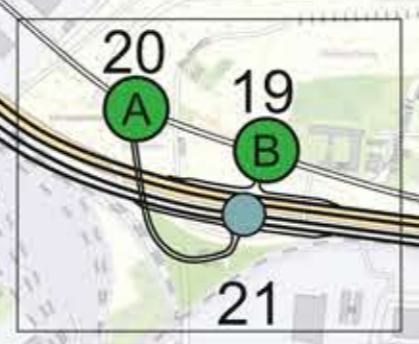
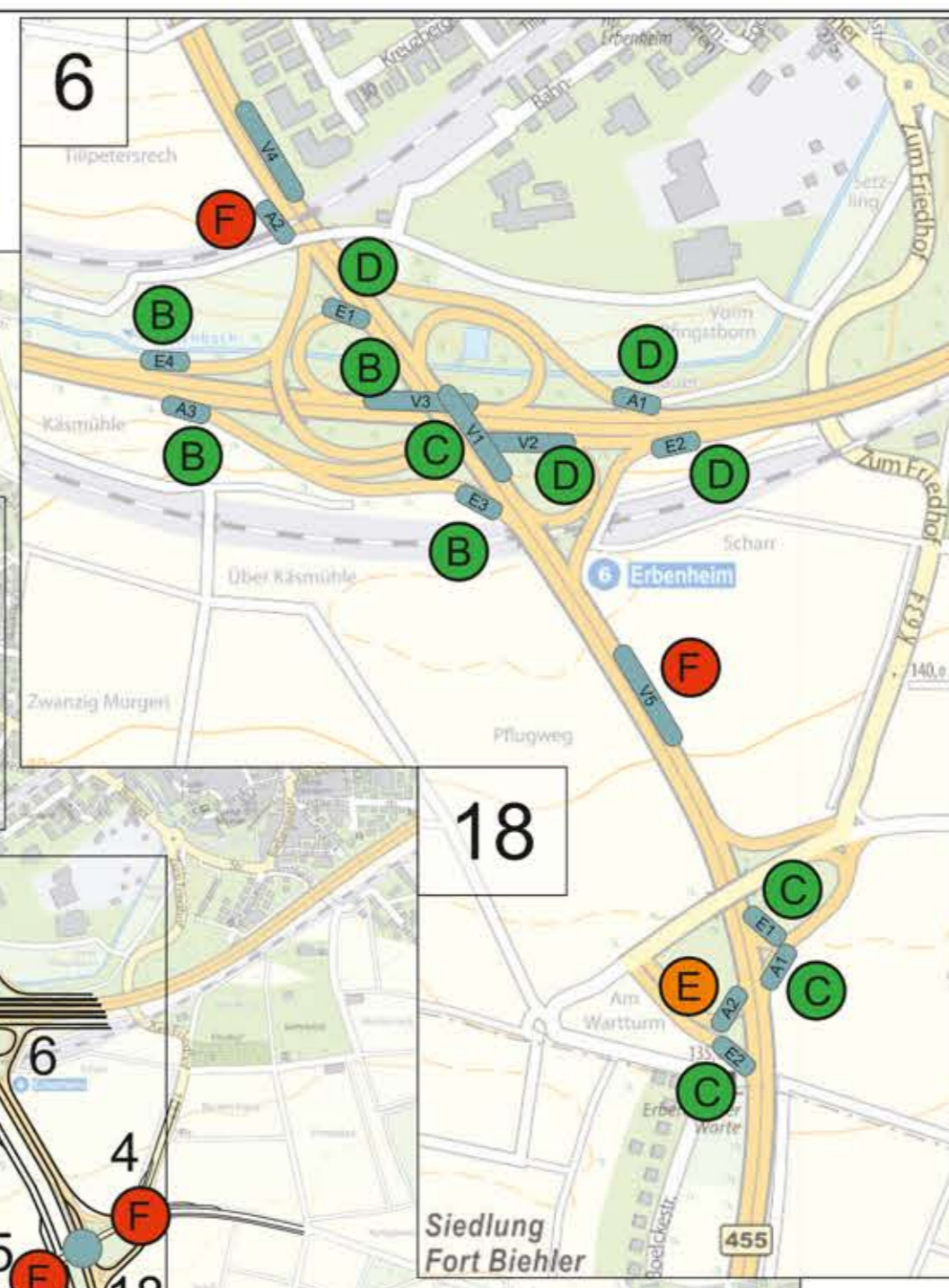
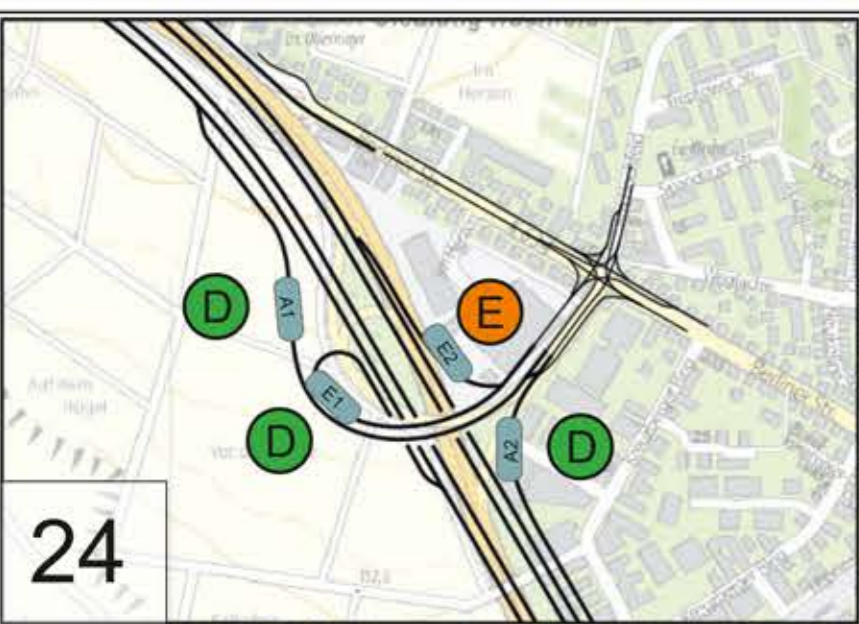
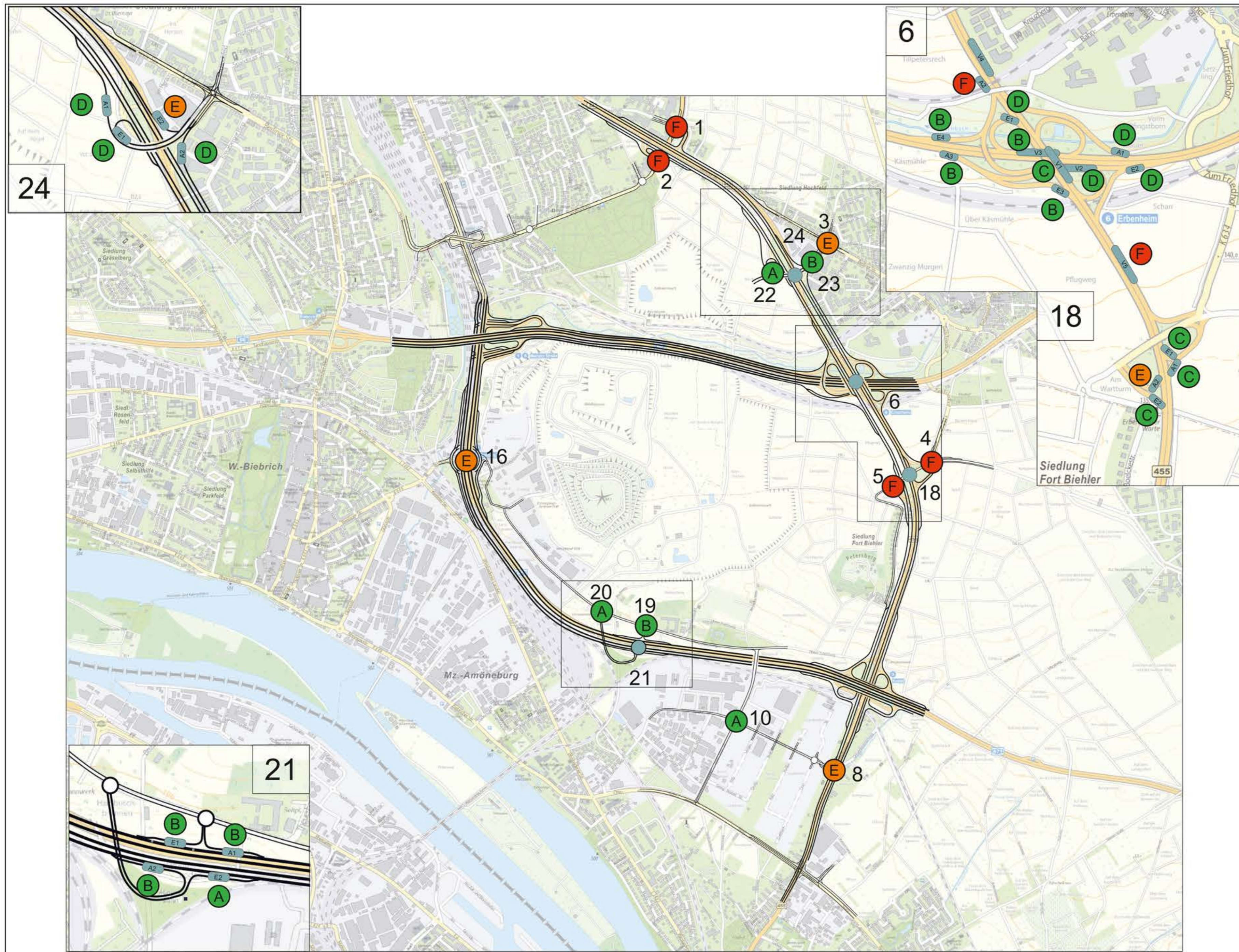


- Legende
- A - D: freier bis noch stabiler Verkehrsfluss
 - E: Instabiler Verkehrsfluss
 - F: Funktionsfähigkeit nicht mehr gegeben



- 1 Abraham-Lincoln-Str. / B455
- 2 Siegfriedring / Berliner Str. / B455
- 3 Berliner Str. / Am Hochfeld / B455
- 4 AS Ost B455 / Zum Friedhof
- 5 AS West B455 / Zum Friedhof
- 6 AS / A66 / B455
- 8 Boelckestraße / Ernst-Galonske-Str.
- 10 Ernst-Gal.- / Anna-Bir.- / Peter-San.-Str.
- 16 Mainzer Str. / Ferdinand-Knettenbrech-Weg
- 18 B455 / AS Wiesbaden Army Airfield
- 19 AS A671 Anschluss Ost (Neu)
- 20 AS A671 Anschluss West (Neu)
- 21 AS A671 (Neu)
- 22 AS B455 Wiesbaden-Erbenheim Anschluss West (Neu)
- 23 AS B455 Wiesbaden-Erbenheim Anschluss Ost (Neu)
- 24 AS B455 Wiesbaden Erbenheim (Umbau)

(Quelle Stadtplan Wiesbaden 2017, eigene Darstellung)